



November 1, 2024

ADDENDUM #2
BL130-24, Construction of Dacula Park Activity Center Expansion

REVISIONS:

- 1. Changes that have been made to the bid documents are outlined below per sheet reference. These changed sheets are attached to addendum 2.**

MECHANICAL DRAWINGS

M1.11: Notes updated.

M3.03: Note added.

M3.04: Note added.

This addendum should be acknowledged in the space provided on page 15 of the bid documents and returned with your bid. Failure to do so may result in your bid being deemed non-responsive.

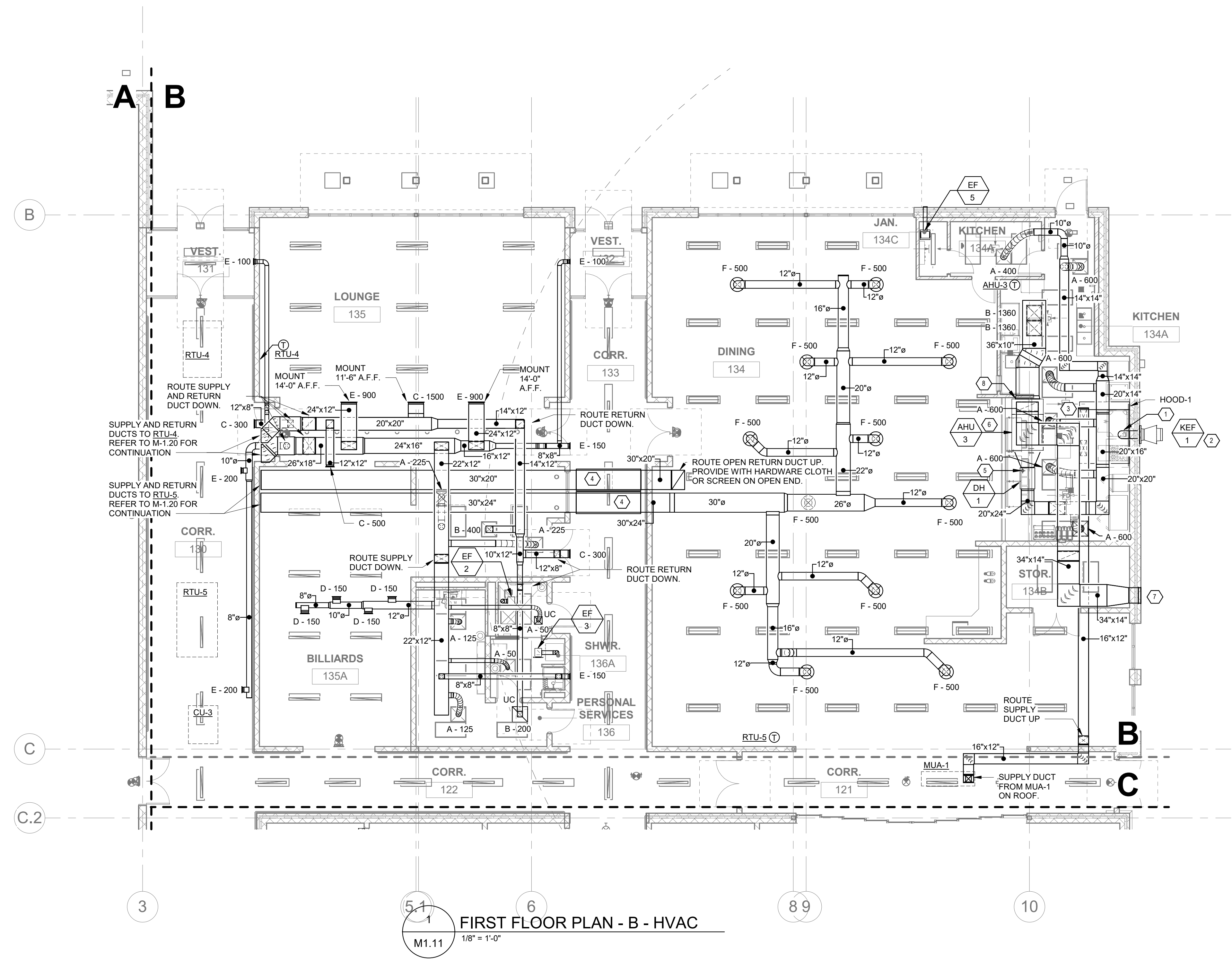
Thank you,

Jake Scarpone

Jake Scarpone
Purchasing Associate II

Attachments:

1. Revisions



- KEYED NOTES:**
- MIN. 16 GA. TO MAX. 18 GA. STEEL GREASE EXHAUST DUCT TO EXHAUST FAN AT SIDEWALL. WRAP ENTIRE LENGTH OF DUCT WITH 3M FIRE MASTER DUCT WRAP OR EQUIVALENT. PROVIDE CLEANOUTS AT TRANSITIONS AND AS REQUIRED.
 - KITCHEN EXHAUST FAN MOUNTED AT SIDEWALL. PROVIDE A MIN. OF 2 FT FROM PARAPETS OR OTHER BUILDING STRUCTURES AND MIN. 10 FT BETWEEN EXHAUST FAN AND ANY OUTSIDE AIR INTAKES. SEE CAPTIVE AIRE DRAWINGS FOR FAN SPECIFICATIONS AND DETAILS.
 - ROUTE 24X10 DUCT TO SUPPLY COLLAR OF HOOD. BALANCE TO 500 CFM EACH. TYPICAL OF 2.
 - DUCTWORK OUTSIDE OF BUILDING. PROVIDE WITH WEATHERPROOF INSULATION ON DUCT.
 - 4" FLUE VENT UP TO ROOF. PROVIDE WITH VENT CAP AS ACCESSORY PER DUCT HEATERS MANUFACTURER.
 - PROVIDE CONDENSATE PIPING WITH P-TRAP AND ROUTE TO NEAREST FLOOR DRAIN. PROVIDE WITH CONDENSATE PUMP WITH 10 FT OF VERTICAL HEAD IF NEEDED.
 - 34X14 OUTSIDE AIR DUCT ROUTED TO SIDEWALL. PROVIDE WITH 24X42 LOUVER GREENHECK MODEL EHH-201 OR SIMILAR.
 - PROVIDE WITH CARRIER CAECOMZR008 ECONOMIZER FOR 10 TON AIR HANDLER. PROVIDE WITH HONEYWELL JADE W7220 CONTROLLER AND ENTHALPY SENSORS FOR FAULT DETECTION AND DIAGNOSTICS. BOTH OA AND RETURN OPENINGS TO BE EQUIPPED WITH ACTUATORS.

FIRST FLOOR PLAN - B - HVAC
M1.11
1/8" = 1'-0"

SAVANT
Engineering, LLC

5064 Roswell Road, Suite D-301
Sandy Springs GA 30342 770.319.7400
Project 24167 ©2024

COA#: PE0004211
EXPIRES: 6/30/2026

**CONSTRUCTION OF DACULA PARK
ACTIVITY CENTER EXPANSION**
BL 130-24
PREPARED FOR:
GWINNETT COUNTY DEPARTMENT OF
COMMUNITY SERVICES

GEORGIA
DACULA

SUBMITTALS / REVISIONS

NO	DATE	DESCRIPTION
2	11/01/24	Addendum #2

FOR CONSTRUCTION

SHEET TITLE
**FIRST FLOOR
PLAN - B - HVAC**

PROJECT NO. 19045-01	DATE 10/03/2024
DRAWN BY RHR	SCALE As indicated
CHECKED BY RGV	
SHEET NO.	

M1.11

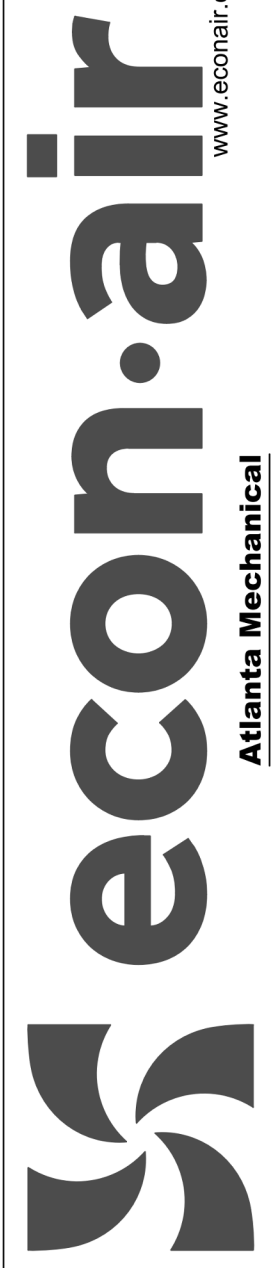
FIRE SYSTEM INFORMATION -- JOB#7079567

FIRE SYSTEM NO	TAG	TYPE	SIZE	MAX FP	DESIGN FP	INSTALLATION	
						SYSTEM	LOCATION ON HOOD
1		TANK FS	4.0/4.0	40	23	FIRE CABINET LEFT	LEFT, HOOD 1

FIRE SYSTEM PARTS LIST KEY

FIRE SYSTEM NO	TAG	KEY NUMBER - PART DESCRIPTION	QTY BY FACTORY	QTY BY DIST
		0 - 0 - TANK FIRE SUPPRESSION POST-DISCHARGE PROCEDURE UTILITY CABINET LABEL SHEET.	1	0
		0 - 0 - TANK FIRE SUPPRESSION MAINTENANCE GUIDE UTILITY CABINET LABEL SHEET.	1	0
		0 - 0 - 12-F28021-32144-0T-360 DUCT FIRE THERMOSTAT WITH 12 FOOT WIRE LEADS. ND, CLOSE ON TEMP RISE AT 360°F. (A0034310).	1	0
		0 - 0 - 4429K153 1/2" MALE NPT TO 1/2" FEMALE NPT ELBOW, BRASS.	2	0
		0 - 0 - 4429K422 1/2" X 1/4" BRASS REDUCING BUSHING.	1	0
		0 - 0 - 79525 1/2" 90 PRO-PRESS ELBOW WITH 1/2" NPT FEMALE CONNECTION, VIEGA.	1	0
		0 - 0 - 79580 1/2" X 1/2" PRO-PRESS TEE X 1/2" NPT FEMALE CONNECTION, VIEGA.	2	0
		0 - 0 - B7-120042-001 SECONDARY ACTUATOR VALVE (SVA) - SINGLE ACTUATOR, REQUIRES PRIMARY RELEASE ACTUATOR, TANK FIRE SUPPRESSION.	1	0
		0 - 0 - B7-120045-001 HOSE, SECONDARY ACTUATOR HOSE, 7.5' BRAIDED STAINLESS STEEL, TANK FIRE SUPPRESSION.	1	0
		0 - 0 - B7-30001-001 TANK - PRESSURIZED TANK USED FOR TANK FIRE SUPPRESSION.	2	0
		0 - 0 - B7-300030-001 PRIMARY ACTUATOR KIT (PAK) - ACTUATOR AND RELEASE SOLENOID ASSEMBLY, ONE NEEDED PER FIRE SYSTEM, SUPERVISED, TANK FIRE SUPPRESSION.	1	0
		0 - 0 - B7-300152-001 HARDWARE, SVA BOLTS, TANK FIRE SUPPRESSION.	8	0
		0 - 0 - 98694A115 HARDWARE, DATANKLOCK LOCKING BRACKET SQUARE NUTS 5/16" ZINC, TANK FIRE SUPPRESSION.	4	0
		0 - 0 - A0034332 JUNCTION BOX FOR MANUAL PULL STATION, 1.5' DEEP BACK BOX, RED COLOR.	1	0
		0 - 0 - A31484 1/4" NPT SCHRADER VALVE AND CAP, JB INDUSTRIES, 1/4" FLARE X 1/4" MPT HALF UNION, USED ON TANK SERVICE PORT.	1	0
		0 - 0 - DATANKLOCK DISCHARGE ADAPTER TANK LOCKING PLATE FOR FIRE SYSTEM TANK INSTALLATION IN UTILITY CABINETS, TANK FIRE SUPPRESSION.	2	0
		0 - 0 - TANK STRAP TANK STRAP - USED FOR TANK FIRE SUPPRESSION.	6	0
		0 - 0 - TFS-UCTANKBRACKET TANK BRACKET FOR FIRE SYSTEM TANK INSTALLATION IN UTILITY CABINETS, TANK FIRE SUPPRESSION.	2	0
		0 - 0 - WK-283952-000 DISCHARGE ADAPTER, TANK FIRE SUPPRESSION.	2	0
		34 - 34 - A0034331 24VDC SINGLE ACTION MANUAL ACTUATION DEVICE (PUSH/PULL STATION) WITH PROTECTIVE COVER, ONE (1) NORMALLY OPEN CONTACT, RED COLOR.	1	0
		ADDITIONAL PARTS TO BE DETERMINED...		

REVISIONS	
DESCRIPTION	DATE



Atlanta Mechanical
1395 S. Marietta Pkwy, Bldg 100, Ste 105, Marietta, GA 30067 PHONE: (478) 419-4768 EMAIL: reg122@econair.com

Rev00_Dacula Activity Center
Dacula, GA, 30019

DATE: 10/2/2024
DWG.#: 7079567
DRAWN BY:
SCALE: 3/4" = 1'-0"
MASTER DRAWING

SHEET NO. 3



5064 Roswell Road, Suite D-301
Sandy Springs GA 30342 770.319.7400
Project 24167 ©2024
COA#: PE0004211
EXPIRES: 6/30/2026

FOR REFERENCE ONLY

HOODS DESIGNED AND PROVIDED BY OTHERS AND INSTALLED BY THE MECHANICAL CONTRACTOR.

LOSE DESIGN
SPACES FOR LIFE.

THIS DRAWING AND THE DESIGN SHOWN IS THE PROPERTY OF THE ARCHITECT. REPRODUCTION, COPYING, OR USE OF THIS DRAWING WITHOUT THEIR WRITTEN CONSENT IS PROHIBITED AND ANY INFRINGEMENT IS SUBJECT TO LEGAL ACTION.



CONSTRUCTION OF DACULA PARK
ACTIVITY CENTER EXPANSION
BL 130-24

PREPARED FOR:
GWINNETT COUNTY DEPARTMENT OF
COMMUNITY SERVICES

GEORGIA

DACULA

SUBMITTALS / REVISIONS		
NO	DATE	DESCRIPTION
2	11/01/24	Addendum #2

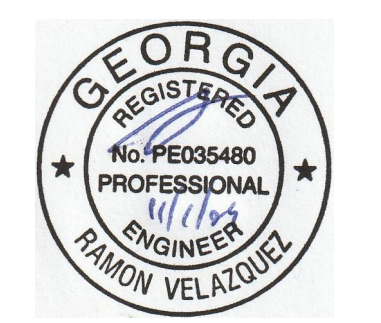
FOR CONSTRUCTION

SHEET TITLE
CAPTIVE AIRE DRAWINGS

PROJECT NO. 19045-01	DATE 10/03/2024
DRAWN BY RHR	SCALE 1 : 19
CHECKED BY RGV	
SHEET NO.	

M3.03

THIS DRAWING AND THE DESIGN SHOWN IS THE PROPERTY OF THE ARCHITECT. REPRODUCTION, COPYING, OR USE OF THIS DRAWING WITHOUT THE WRITTEN CONSENT OF THE ARCHITECT AND ANY INFRINGEMENT IS SUBJECT TO LEGAL ACTION.



GEORGIA
REGISTERED
PROFESSIONAL
ENGINEER
RAMON VELAZQUEZ

CONSTRUCTION OF DACULA PARK
ACTIVITY CENTER EXPANSION
BL 130-24
PREPARED FOR:
GWINNETT COUNTY DEPARTMENT OF
COMMUNITY SERVICES

DACULA

SUBMITTALS / REVISIONS	
NO	DESCRIPTION
2	11/01/24 Addendum #2

FOR CONSTRUCTION

SHEET TITLE
CAPTIVE AIRE DRAWINGS

PROJECT NO. 19045-01	DATE 10/03/2024
DRAWN BY RHR	SCALE 1:19
CHECKED BY RGV	
SHEET NO.	

M3.04

REVISIONS	
DESCRIPTION	DATE

econ·air
Atlanta Mechanical
1395 S. Marietta Pkwy, Bldg 100, Ste 105, Marietta, GA 30067 PHONE: (478) 419-4788 EMAIL: reg12@econair.com

Rev01_Dacula Activity Center
Dacula, GA, 30019

DATE: 10/25/2024
DWG.#: 7127756
DRAWN BY:
SCALE: 3/4" = 1'-0"
MASTER DRAWING

SHEET NO.
4

SAVANT
Engineering, LLC

5064 Roswell Road, Suite D-301
Sandy Springs GA 30342 770.319.7400
Project 24167 ©2024

COA#: PEF004211
EXPIRES: 6/30/2026

EXHAUST FAN INFORMATION - JOB#7127756

FAN UNIT NO	TAG	QTY	FAN UNIT MODEL #	MANUFACTURER	CFM	ESP	RPM	MOTOR ENCL	HP	BHP	PHASE	VOLT	FLA	DISCHARGE VELOCITY	WEIGHT (LBS)	SDNES
1	KEF-1	1	EADUS0H	ECON-AIR	1225	0.500	1332	DDP	0.500	0.2350	3	208	2.0	466 FPM	98	12.1

MUA FAN INFORMATION - JOB#7127756

FAN UNIT NO	TAG	QTY	FAN UNIT MODEL #	BLDWER	HOUSING	MIN CFM	DESIGN CFM	ESP	RPM	MOTOR ENCL	HP	BHP	PHASE	VOLT	FLA	MCA	MDCP	WEIGHT (LBS)	SDNES
2	MUA-1	1	EAI-D.250-G10	G10D	A1-D.250	1000	1017	0.500	1274	TEAD-ECM	1.000	0.2910	1	208	6.9	9.8A	15A	456	24.8

GAS FIRED MAKE-UP AIR UNIT(S)

FAN UNIT NO	TAG	INPUT BTUs	OUTPUT BTUs	TEMP RISE	REQUIRED INPUT GAS PRESSURE	GAS TYPE	BURNER EFFICIENCY(%)
2	MUA-1	61645	56713	55°F	7 IN. W.C. - 14 IN. W.C.	NATURAL	92

FAN #1 EADUS0H - EXHAUST FAN (KEF-1)

FAN OPTIONS

FAN UNIT NO	TAG	QTY	DESCRIPTION		
1	KEF-1	1	GREASE BOX		
		1	FAN BASE CERAMIC SEAL - DU/DR50HFA - INSTALLED AT PLANT - FOR GREASE DUCTS		
		1	THROUGH WALL CURB MOUNT INSTALLATION. CURB HEIGHT MUST BE MINIMUM 10" TALLER THAN WALL THICKNESS FOR USE WITH A HINGE KIT		
		1	WALL MOUNT CONSTRUCTION FOR FAN		
		1	SHIP LOOSE DISCONNECT FOR REMOTE MOUNT		
		1	HINGE KIT LOCKING (XHD)- SHIPS LOOSE FOR CURB SUPPLIED BY OTHERS		
		1	2 YEAR PARTS WARRANTY		
		2	MUA-1	1	SIZE 1 TEMPERED COMMERCIAL DOWN DISCHARGE FOR DIRECT DRIVE AHUS
				1	INLET PRESSURE GAUGE, 0-35"
				1	MANIFOLD PRESSURE GAUGE, -5 TO 15" WC
1	SHIP LOOSE GAS STRAINER 3/4"				
1	CASLINK BUILDING MONITORING SYSTEM - INTERNET OR CELLULAR CONNECTION REQUIRED				
1	MOTORIZED BACKDRAFT DAMPER FOR A1-D HOUSING - MEETS AMCA CLASS 1A RATING				
1	COMMERCIAL SMOKE DETECTOR/ALARM INTERLOCK - ALARM SUPPLIED BY OTHERS				
1	FREEZE/STAT				
1	ECM WIRING PACKAGE-SUPPLY - PWM SIGNAL FROM ECM03 PREWIRE (TELCO MOTOR), CW ROTATION				
1	2 YEAR PARTS WARRANTY				
1	EXTERIOR GAS CONNECTION PROVIDED BY FACTORY WITH QUICK SEAL AND ANTI-ROTATION BRACKET				

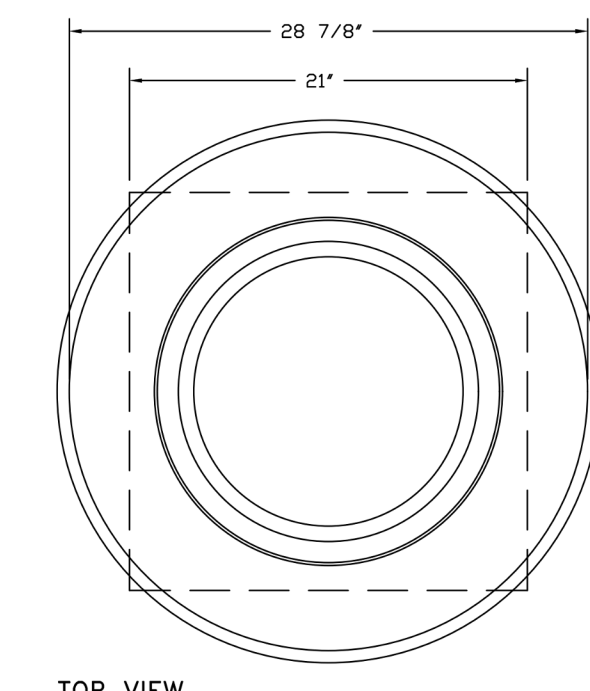
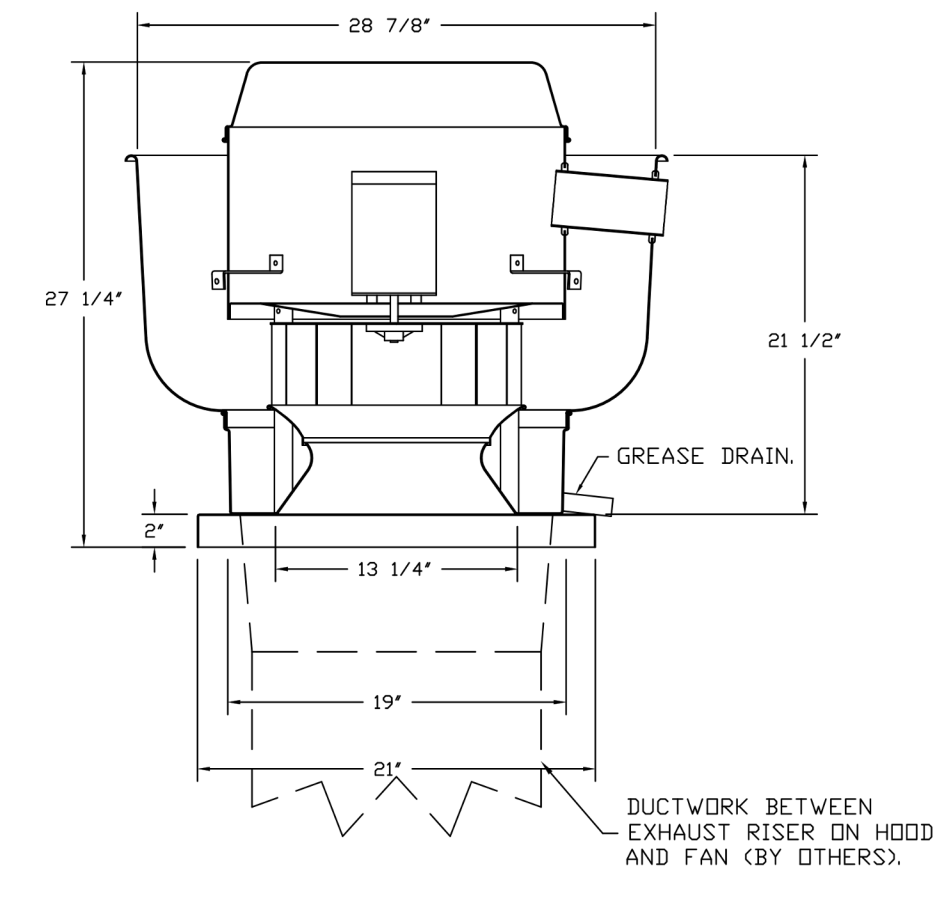
FAN ACCESSORIES

FAN UNIT NO	TAG	EXHAUST				SUPPLY		
		GREASE CUP	GRAVITY DAMPER	WALL MOUNT	SIDE DISCHARGE	GRAVITY DAMPER	MOTORIZED DAMPER	WALL MOUNT
1	KEF-1	YES						
2	MUA-1						YES	

CURB ASSEMBLIES

NO	DN FAN	TAG	WEIGHT	ITEM	SIZE
1	# 1	KEF-1	35 LBS	CURB	19.500"W X 19.500"L X 27.000"H VENTED.
2	# 2	MUA-1	63 LBS	CURB	21.000"W X 71.000"L X 12.000"H INSULATED.

HMI SCHEDULE				
UNIT NUMBER	HMI #	HMI LOCATION	TEMP AVERAGING	MODBUS ADDRESS
FAN #2	HMI #1 - UNIT	IN UNIT	NOT AVERAGED	55



TOP VIEW

FEATURES:

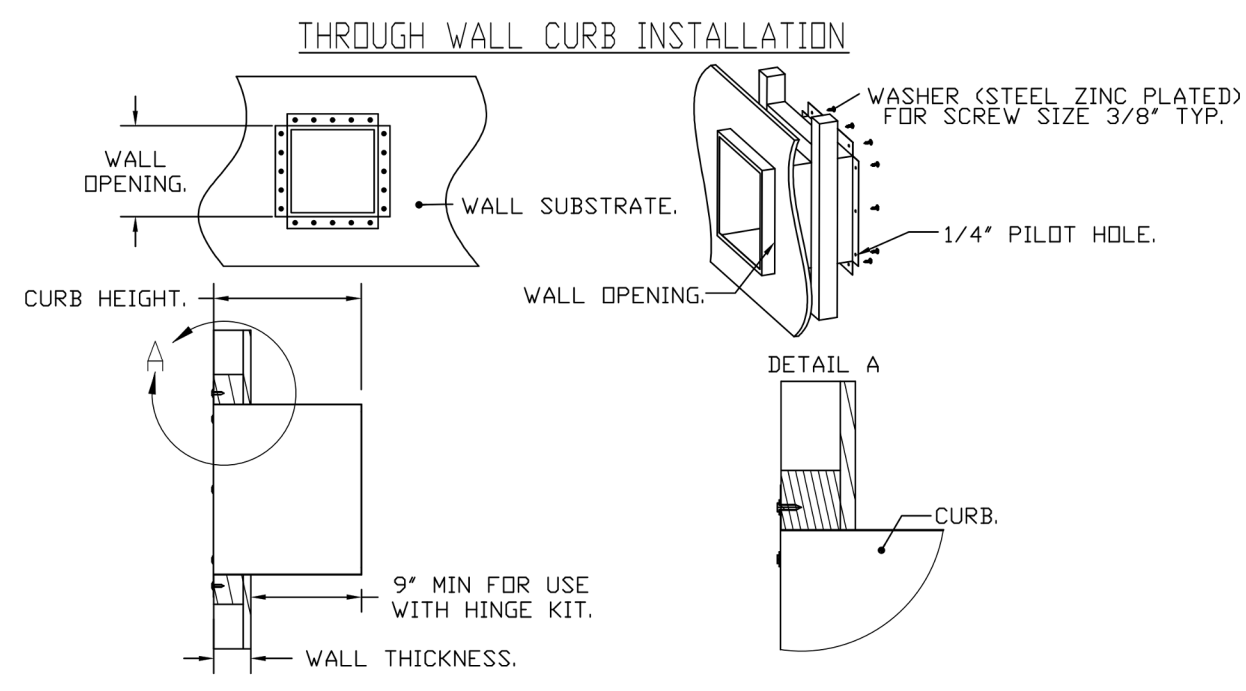
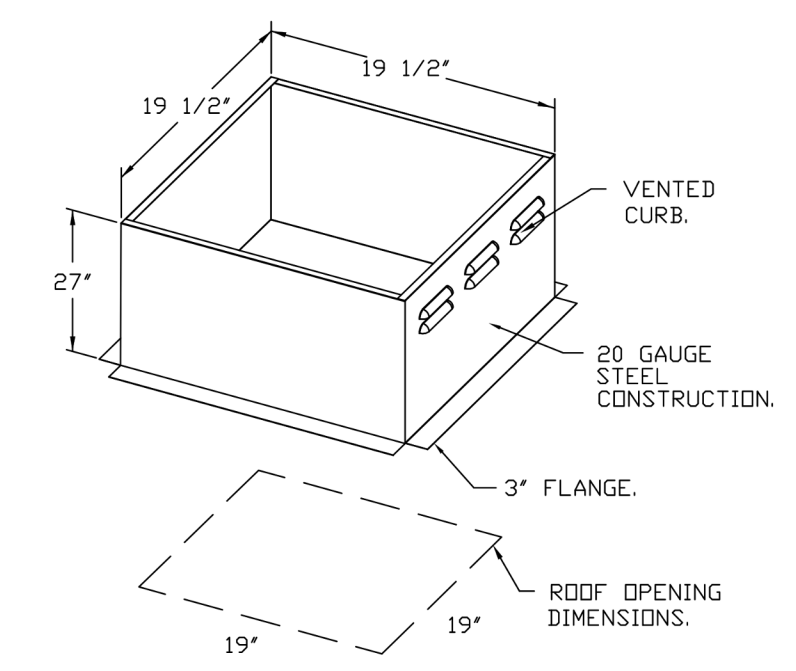
- DIRECT DRIVE CONSTRUCTION (NO BELTS/PULLEYS).
- RESTAURANT MODEL.
- UL705 AND UL762 AND UL-C-5645
- VARIABLE SPEED CONTROL.
- INTERNAL WIRING.
- THERMAL OVERLOAD PROTECTION (SINGLE PHASE).
- HIGH HEAT OPERATION 300°F (149°C).
- GREASE CLASSIFICATION TESTING.
- NEMA 3R SAFETY DISCONNECT SWITCH.

NORMAL TEMPERATURE TEST
EXHAUST FAN MUST OPERATE CONTINUOUSLY WHILE EXHAUSTING AIR AT 300°F (149°C) UNTIL ALL FAN PARTS HAVE REACHED THERMAL EQUILIBRIUM, AND WITHOUT ANY DETERIORATING EFFECTS TO THE FAN WHICH WOULD CAUSE UNSAFE OPERATION.

ABNORMAL FLARE-UP TEST
EXHAUST FAN MUST OPERATE CONTINUOUSLY WHILE EXHAUSTING BURNING GREASE VAPORS AT 600°F (316°C) FOR A PERIOD OF 15 MINUTES WITHOUT THE FAN BECOMING DAMAGED TO ANY EXTENT THAT COULD CAUSE AN UNSAFE CONDITION.

OPTIONS:

- GREASE BOX.
- FAN BASE CERAMIC SEAL - DU/DR50HFA - INSTALLED AT PLANT - FOR GREASE DUCTS.
- THROUGH WALL CURB MOUNT INSTALLATION. CURB HEIGHT MUST BE MINIMUM 10" TALLER THAN WALL THICKNESS FOR USE WITH A HINGE KIT.
- WALL MOUNT CONSTRUCTION FOR FAN.
- SHIP LOOSE DISCONNECT FOR REMOTE MOUNT.
- HINGE KIT LOCKING (XHD)- SHIPS LOOSE FOR CURB SUPPLIED BY OTHERS.
- 2 YEAR PARTS WARRANTY.



HOODS DESIGNED AND PROVIDED BY OTHERS AND INSTALLED BY THE MECHANICAL CONTRACTOR.