

Winter 2022



Gwinnett County offers the Apartment Adviser newsletter to help multifamily communities throughout Gwinnett thrive and maintain the Gwinnett County standard of excellence. Apartment Adviser consists of tips and articles from various departments in Gwinnett County's Government to assist apartment managers in better serving their residents.

You are receiving this newsletter because you have been identified as a contact for a community located in Gwinnett County. While you are welcome to unsubscribe through the link at the bottom of this email, we hope you continue to subscribe

to our quarterly newsletter – where you can receive safety tips, learn about upcoming events, and stay updated on commercial codes.

FIRE SAFETY

Learn some tips to prevent apartment fires

The improper use and disposal of smoking materials are one of the leading causes of apartment fires.

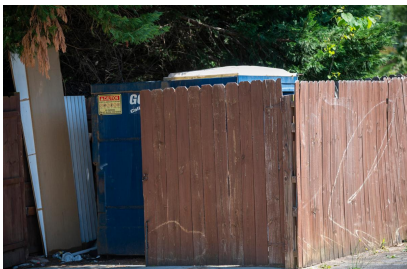
Here's what you need to know to prevent it:

- It's safest to simply not smoke in your apartment. Most deaths are caused by fires that start in living rooms, family rooms, and in bedrooms.
- Never smoke in bed and don't leave burning cigarettes unattended
- Ensure that you have working smoke detectors
- Identify a smoking area at least 10 feet away from any structure
- Some buildings provide a smoking receptacle to keep residents from discarding cigarettes in vegetation such as mulch, potted plants or landscaping, peat moss, dried grasses, leaves, or other things that could ignite easily.



For additional information about fire and life safety education, please contact Fire Education at 678.518.4845 or email FirePrograms@GwinnettCounty.com.

PLANNING AND DEVELOPMENT



Keep it clean

Waste management can be an ongoing challenge for multi-family communities because of several factors.

Here are some tips to prevent code violations in designated trash areas:

- Establish waste management rules and penalties in your lease agreement
- Communicate the importance to tenants through a monthly newsletter or email that all trash must be placed in a trash bag and disposed of inside the dumpster or compactor
- Post signs in the dumpster area that explain penalties and advise the area is monitored with cameras
- Solicit help from your hauler to:
 1. Secure your area through code access for residents only
 2. Increase frequency of pickup and/or size of dumpster/compactor

3. Have regular preventative maintenance on compactors

- Investigate trash to identify source and include it as a lease violation with fines that require payment of clean up and/or pursue prosecution especially for non-residents (illegal dumping)
- Provide a screened in storage option for bulk trash items to prevent them being placed in the dumpster/compactor areas and notify residents especially prior to move out
- Invest in a valet trash service

WATER RESOURCES

To flush or not to flush?

Flushing doesn't mean it's gone. Paper towels, cotton swabs, cotton balls, dental floss, sanitary products, and others can cause harm to the environment.

When an entire apartment complex flushes non-flushable items, clogs and blockages can develop, leading to service interruptions, pollution to waterways, and even backups in your own plumbing. To avoid these problems, make sure to only flush toilet paper and human waste down the toilet and encourage your neighbors to do the same!



Visit our [What Not To Flush webpage](#) to learn more about the items that should not be flushed.

POLICE



Prepare your car for winter weather

Now that the weather is getting colder, no one likes a freezing car seat or frosted windows, it makes it very tempting to go outside, crank your car, and go back in your apartment to finish getting ready — our Gwinnett County Police department discourages doing that.

Leaving your car running and the keys inside makes it an easier target for criminals to steal. It may be inconvenient, and a little cold, but use a scraper to remove frost from your windows and

use the car's defroster. If needed, keep a blanket in your vehicle to stay warm while the engine heats up. For safe practices, visit [GwinnettSafety411.com](#).

COUNTY NEWS

Drop off your Christmas tree for recycling

Residents are invited to take part in one of the largest "treecycling" events in Georgia! Through January 24, drop off your live Christmas tree at a designated [Gwinnett Fire Stations](#) as part of the annual Bring One for the Chipper event.

On January 29, Gwinnett Clean & Beautiful will chip the trees into mulch for use at County parks. The Bring One for the Chipper event is from 8:00am to 11:00am at Bethesda Park located at 225 Bethesda Church Road in Lawrenceville.

Visit [GwinnettCB.org/Events](#) to register to volunteer for the chipping event.



Household Hazardous Waste event set for February 12

Do you have hard-to-dispose-of items like paints, pesticides, and batteries stacking up around your home? Gwinnett Clean & Beautiful is partnering with the Gwinnett Water Resources to host the seventh annual Household Hazardous Waste Collection Day on Saturday, February 12.

The HHW event is from 9:00am to 1:00pm at the Gwinnett County Fairgrounds located at 2405 Sugarloaf Parkway in Lawrenceville. The event is at no cost to residents. For a complete list of acceptable items and guidelines, or to volunteer, visit [GwinnettCB.org/Event/HHW](#). For more information or questions, visit [Gwinnett2o.com](#) or [GwinnettCB.org/Events](#).

Connecting People and Places: A Community Conversation About Litter

A good community is a cohesive, confident, prosperous, and happy place. Join Gwinnett Clean & Beautiful on Wednesday, March 23 at Georgia Gwinnett College to discuss the issue of littering on a hyperlocal scale.

The event is from 7:30am to 10:00am and will include a series of speakers and panelists, including representatives from [Keep America Beautiful](#). This hybrid forum will afford the public the opportunity to submit their questions to drive the conversation. For updates about “Connecting People and Places: A Community Conversation” visit the event page at [GwinnettCB.org](#) and stay connected through GC&B’s social media pages on [Facebook](#), [Twitter](#), and [Instagram](#).



The event will take place at GGC's Large Venue Interactive Space room, located at 1000 University Center Lane in Lawrenceville.

Visit our website, social media for latest news

To stay up-to-date on the County government, visit our website, [GwinnettCounty.com](#) or follow us on [Facebook](#), [Twitter](#), and [Instagram](#) @GwinnettGov.

GWINNETT COUNTY CONTACTS

For questions regarding fire safety, code enforcement, and crime prevention, property owners and managers should contact:

Fire Safety

Jim Egan
678.518.4907

Jim.Egan@GwinnettCounty.com

Code Enforcement

Edward Wallace
770.513.5033

Ed.Wallace@GwinnettCounty.com

Crime Prevention

Joseph Brewer
770.513.5000

Joseph.Brewer@GwinnettCounty.com

Christian Matos

770.513.5000

Christian.Matos@GwinnettCounty.com

Planning & Development Department

678.518.6000

CodeEnforcement@GwinnettCounty.com

Follow us

